

NFDI4Earth

TA2 - 2Facilitate

Lead: DKRZ, KIT, MPIBG

1st NFDI4Earth Plenary Meeting 09.06.2022

Ivonne Anders (DKRZ), Peter Braesicke (KIT), Felix Cremer (MPIBG), Fabian Gans (MPIBG), Sibylle Hassler (KIT), Sören Lorenz (GEOMAR), Hannes Thiemann (DKRZ)

Aims of TA 2Facilitate

- Supporting the community in all aspects of FAIR data and the associated infrastructures in NFDI4Earth
- Promoting new technologies for FAIR data as best practice examples/templates.



NFDI4Earth2Facilitate

M2.1: OneStop4All

M2.2: User Support

M2.3: Governmental Data

M2.4: Data in Long-Term Storage

M2.5: Advancing Tools

Task Area 2

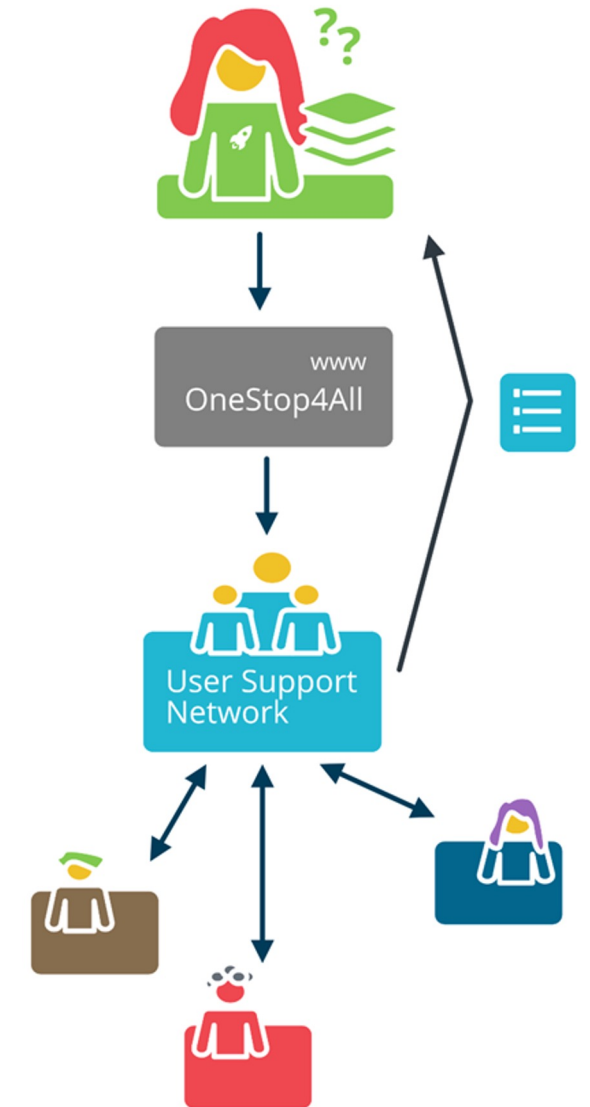
Aims of the measures of TA 2Facilitate

M2.1 OneStop4All (DKRZ, KIT, HZH)

... builds a web-based, visible entry point for the contents of NFDI4Earth and beyond. It provides basic information, e.g. on how to find existing datasets and access them, how to contact repositories, how to start the process of making data FAIR, and how to find the different services which are offered by NFDI4Earth. ...

M2.2 User Support (GEOMAR, LRZ, GFZ, TUDD, UNIH, FUB, DKRZ, KIT)

... creates a user support network for enquiries that go beyond the basic functionalities of the OneStop4All. The experts in the network interact directly with the querists and form the connection to the existing support infrastructures of the partners. ...



Aims of the measures of TA 2Facilitate

M2.3 Governmental Data (*DWD, BKG, BGR, BSA*) (*starting soon*)

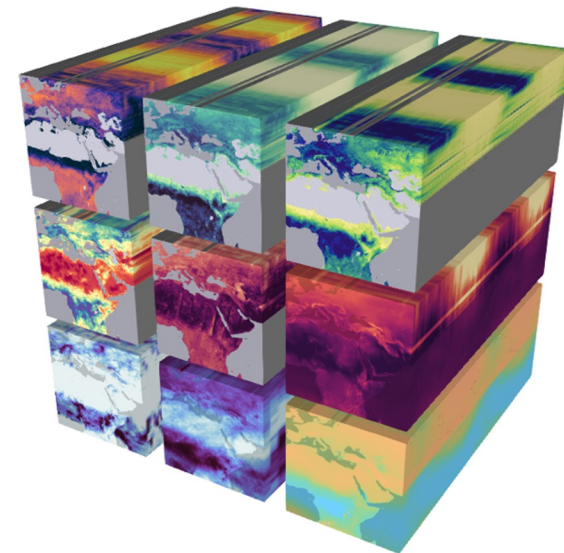
.. will provide access to a plethora of data which exists in governmental databases and which are strictly regulated by national and international laws and norms. It will also support establishing communication channels between researchers and governmental data providers. ..

M2.4 Data in Long-Term Storage (*BKG, BSA, UNIKI*) (*starting soon*)

.. combines different perspectives to improve long-term and comprehensive re-use of data. One goal is to establish criteria for choosing data for long-term storage.

M2.5 Advancing Tools (*MPIBGC, UNIL, KIT, DLR, UNIMS*)

.. provides an environment for exploration of data in all kinds of repositories. This encompasses data cubes , other new technologies, thematic viewers (TVs) DataHub, ...



Current team of TA 2Facilitate



Peter Braesicke
(KIT)



Hannes Thiemann
(DKRZ)



Sibylle Hassler
(KIT)



Ivonne Anders
(DKRZ)

NFDI4Earth2Facilitate

- M2.1: OneStop4All
- M2.2: User Support
- M2.3: Governmental Data
- M2.4: Data in Long-Term Storage
- M2.5: Advancing Tools

Task Area 2



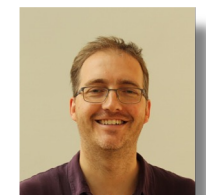
Sören Lorenz
(GEOMAR)



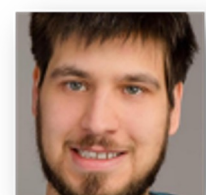
Hela Mehrtens
(GEOMAR)



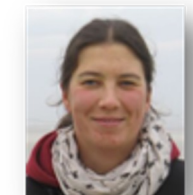
Markus Reichstein
(MPIBGC)



Fabian Gans
(MPIBGC)

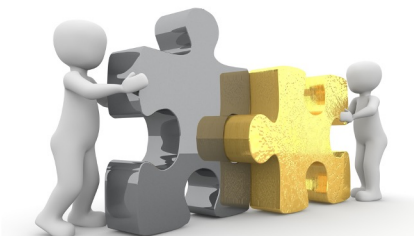
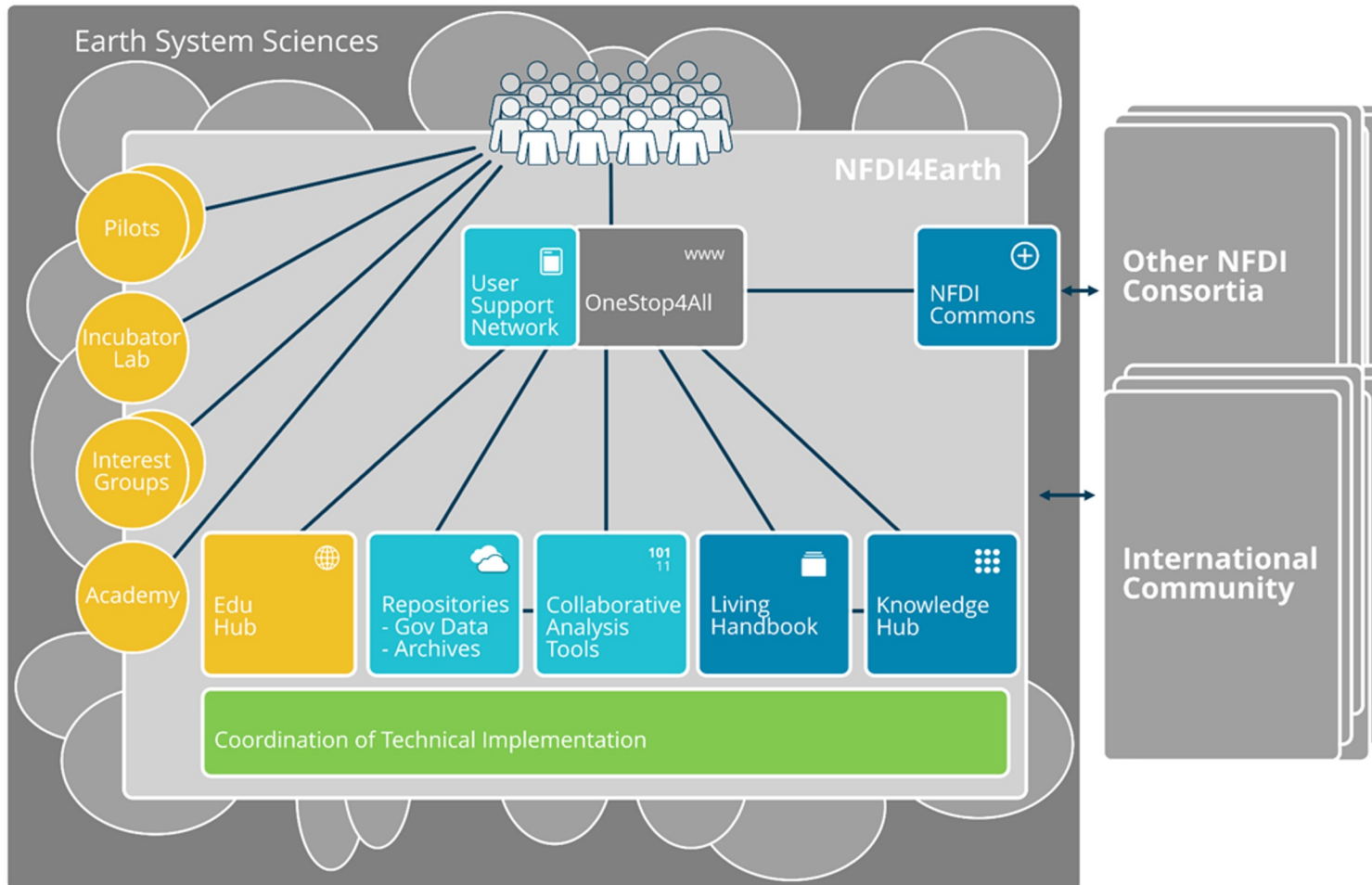


Felix Cremer
(MPIBGC)



Sibylle Hassler
(KIT)

Integration of TA 2Facilitate Coordination/synergies/collaboration with other TAs



Integration of TA 2Facilitate Coordination/synergies/collaboration with other TAs

M4.1
Coordination, Collaborative and Sustainable
Governance of NFDI4Earth

M4.3 Central Support Services
for the federated NFDI4Earth

M1.1 ESS
Pilots

M1.2 Incubator
Lab

M3.3 NFDI
Commons

M2.1
OneStop4All

M2.2 User
Support

M2.3
Governmental
Data

M2.4 Data in
Long-Term
Storage

M2.5 Advancing
Tools

M3.1
NFDI4Earth
Architecture

M1.3 Education
and Training
Materials &
Services

M3.2 Common
Standards for
FAIR ESS Data

M4.2
Towards a Cultural Change in
ESS RDM

M1.4
NFDI4Earth
Academy

Current work in TA2

M2.1 OneStop4All



- ***User-centered design of the services and products of the NFDI4Earth is important!***

.... including our OneStop4All!

In this way we can:

- **Foster innovation** - support the development of innovative products and services by including user's expert knowledge
- **Increase usage / acceptance** - facilitating efficient and satisfactory usage of the NFDI4Earth and linked community products and services, including specific user needs
- **Create positive user experience** - fosters the sustainability of the virtual environment
- **Ensure efficient development** - include end-users in requirement analysis, concept design as well as in evaluation and testing



Current work in TA2

M2.1 OneStop4All



Expert Group "User" - TA1, TA2, TA3, TA4

Point of Contact: Ivonne Anders (M2.1, DKRZ) and Sibylle Hassler (M2.1, KIT)

Member: Christin Henzen (TA4, TUDD); Veronika Grupp (M1.1, UNIL); Auriol Degbelo (TA4, TUDD); Thomas Rose (M3.3, UNIF); Jonas Kuppler (M1.4, GFZ/Geo.X); Farzaneh Sadeghi (M1.3, HSBO); Sören Lorenz (M2.2, GEOMAR); Dominik C. Hezel (M3.3, UNIF)

- **consolidated view of users of NFDI4Earth products and services**

→ forms the basis for the work in all TAs (structuring, concepts of architecture, development of data models, choice of tools and software, etc. ...).

- Collect user stories
- Creation of a user feedback group with participants from inside and outside NFDI4Earth.

JOIN US! Visit our posters and be part of it!

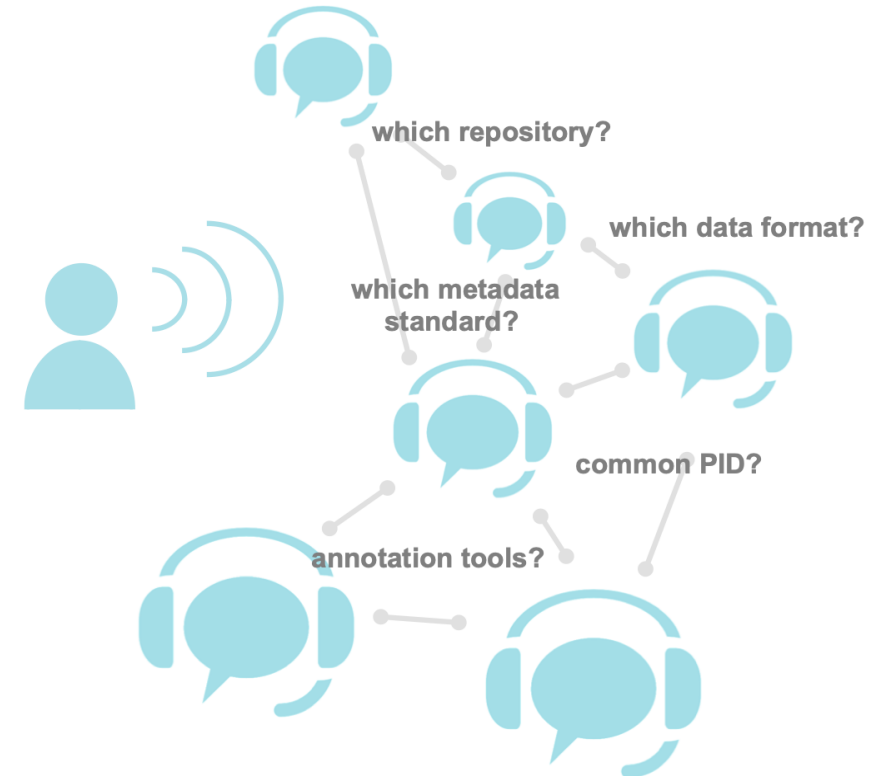
User Feedback Group
Become part of it!
Who are the users?
YOU are one of them!
Why is user-centered design of our products and services important?
In this way we can:
• foster innovation - support the development of innovative products and services by involving user expert knowledge
• increase usage - facilitates efficient and satisfactory usage of the virtual earth and shared community products and services and meet specific user needs
• create positive user experience - fosters the sustainability of the virtual environment
• ensure efficient development - involve end-users in requirement analysis, concept design as well as evaluating and testing
Your Benefit!
→ Exclusive pre-release access to our products and services
Your commitment!
→ a non-task-off interview in the next 3 months,
→ providing feedback during the stages of development, and
→ a yearly workshop.
GREAT, that YOU are part of it REGISTER HERE!
Use the online form to register or being part of the user feedback group and actively design the products of the NFDI4Earth!

We want to do great!
What do YOU expect the NFDI4Earth can do for you or the Research Community?
BE PART!
Use one of the forms or tell it personally.
I want to explore the new features for a longer time, but don't have enough resources. Could the data sampling frequency be increased?
I have a large set of data, but I don't know how to process it. I need the ability to filter and analyze large amounts of data.
I'm a user of the NFDI4Earth and I need to know what the virtual earth can do for me. I need specific services and I need to know what the NFDI4Earth can do for me.
I'm looking for a service that can help me to analyze data and I need to know what the NFDI4Earth can do for me.
I have integrated a new technology and I need to know what the NFDI4Earth can do for me.
I have integrated a new technology and I need to know what the NFDI4Earth can do for me.

Current work in TA2

M2.2 User Support

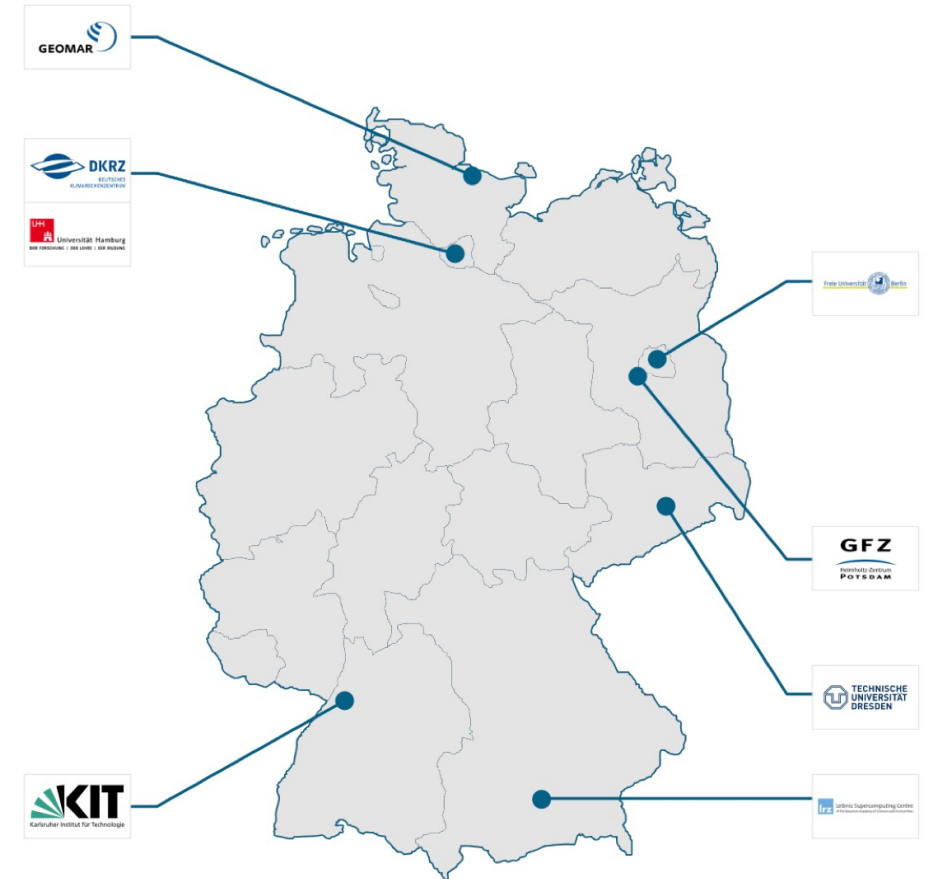
- **Create a *Distributed User Support Network***
 - brings together existing RDM user support expertise
 - helps, when the OneStop4All does not provide the simple solution
 - ESS User directly interact with RDM experts to find practical solutions
- ***We will implement an open network, all ESS RDM support groups are invited!***
- ***Strong interaction with OneStop4All***
 - define common workflows
 - use common N4E Knowledge Base



Current work in TA2

M2.2 User Support

- **Initial step: workshop of measure members this summer**
 - mapping of institutional support competences (domain, RDM methods, Infrastructure) and gap analysis
 - define principles of cooperation (organizational requirements)
 - develop concept of network operation (i.e. how to channel requests and communication with users)
 - deploy ticketing system for initial user support interaction (provided by TU Dresden)



Initial members to develop the concepts and create the network: DKRZ, FUB, GEOMAR, GFZ, KIT, LRZ, TUD, Uni HH

Current work in TA2

M2.5 Advancing Tools / State of the Art

- **Creation of a state of the art analysis of data handling**

screening of available technologies, determination of suitability for FAIR data handling of these technologies e.g.

- different data formats (NetCDFm Tile DB, Zarr, cloud optimized GeoTIFF, ...)
- STAC as an emerging metadata standard
- data cube solutions
- cloud deployment



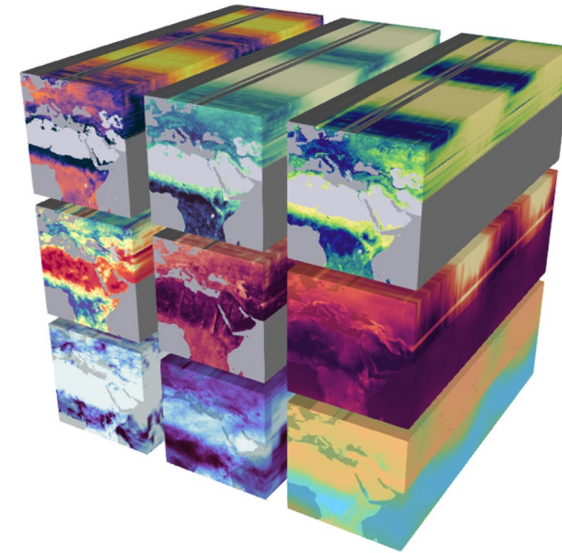
What are we missing? Please, tell us!



Current work in TA2

M2.5 Advancing Tools Current Work

- **Next steps:**
 - further development of data cube solutions
 - support of the pilot and incubator projects
 - scanning the user stories
 - Input to Knowledge Hub and Living Handbook



TA2 is not the work of individuals but combines the activities and services of all participants in NFDI4Earth! We are looking forward to the collaboration and fruitful and intensive exchange!



Let's talk about
Next Steps
and join us in the TA2 Meeting tomorrow!

2pm - 3pm

